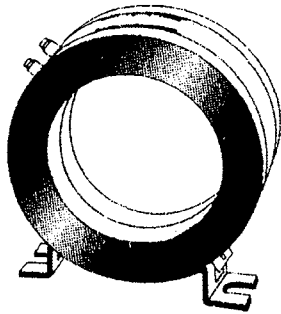
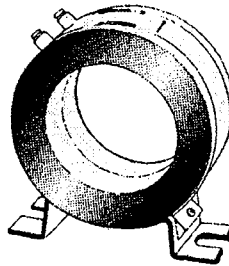
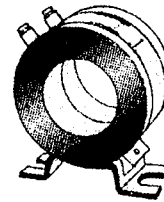
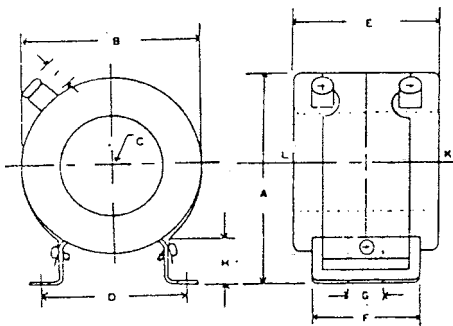
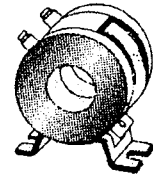


**RCT-15-4****RCT-15-3****RCT-15-2****RCT-15-1**

Model	Primary Current Rating (Amp)	Sec. Current (A)	Burden (VA)	Accuracy	Power Strength	Weight
RCT-15-1	20-300	5	15	1.0	40	0.8
RCT-15-2	400-600	5	15	1.0	40	1
RCT-15-3	800-1,200	5	15	1.0	40	1.3
RCT-15-4	1,600-3,000	5	15	1.0	40	2

Model	A	B	C	D	E	F	G	H	I
RCT-15-1	95	75	35	65	55	45	8	20	13
RCT-15-2	120	100	60	65	55	45	8	20	13
RCT-15-3	150	130	90	65	55	45	8	20	13
RCT-15-4	190	180	120	145	60	45	8	20	13

TYPE	POSITION	PRICE
RCT-15-1	30 / 5A, 50 / 5 A	@ n/a
	60 / 5 A	@ n/a
	100 / 5 A	@ n/a
	150 / 5 A	@ n/a
	200 / 5 A	@ n/a
RCT-15-2	250 / 5 A	@ n/a
	300 / 5 A	@ n/a
	400 / 5 A	@ n/a
	500 / 5 A	@ n/a
	600 / 5 A	@ n/a
RCT-15-3	800 / 5 A	@ n/a
	1,000 / 5 A	@ n/a
	1,200 / 5 A	@ n/a
RCT-15-4	1,500 / 5 A	@ n/a
	2,000 / 5 A	@ n/a
	2,500 / 5 A	@ n/a
	3,000 / 5 A	@ n/a



MFO-30



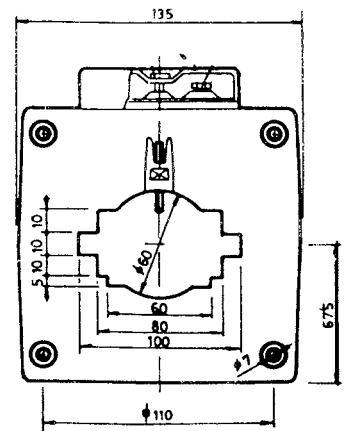
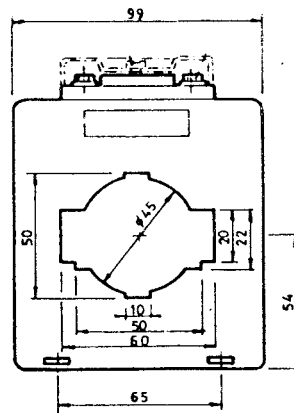
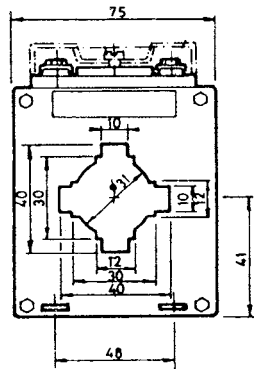
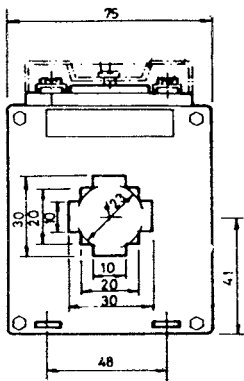
MFO-40



MFO-60



MFO-100



30/5A-150/5A
2-3VA
Class 1
INSULATION 600V

200/5A-400/5A
3-5VA
Class 1
INSULATION 600V

400/5A-800/5A
7.5-10VA
Class 1
INSULATION 600V

1,000/5A-3,000/5A
10-15VA
Class 1
INSULATION 600V

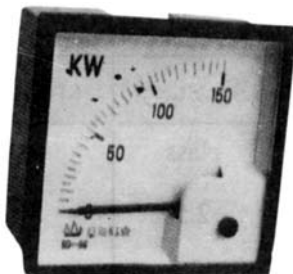
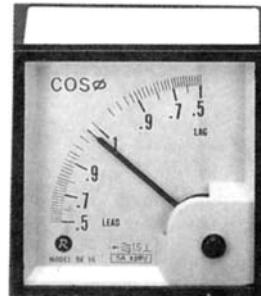
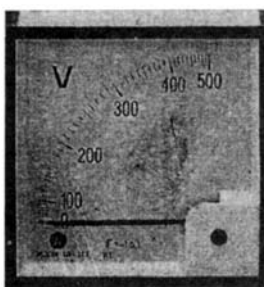
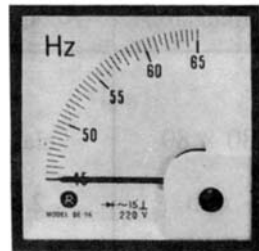
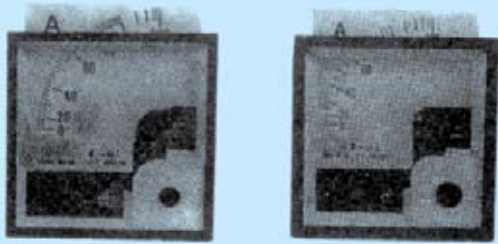
TYPE	CURRENT	PRICE
MFO-30	30 / 5, 50 / 5, 60 / 5, 100 / 5, 150 / 5	@ n/a
MFO-40	200 / 5, 250 / 5, 300 / 5	@ n/a
	400 / 5	@ n/a
MFO-60	400 / 5, 500 / 5	@ n/a
	600 / 5	@ n/a
	800 / 5	@ n/a
MFO-100	1,000 / 5	@ n/a
	1,200 / 5	@ n/a
	1,500 / 5	@ n/a
	2,000 / 5	@ n/a
	2,500 / 5	@ n/a
	3,000 / 5	@ n/a

ราคานี้อาจเปลี่ยนแปลงโดยไม่ต้องแจ้งให้ทราบล่วงหน้า



■ PANEL METER SIZE 96 x 96

SCALE PLATE REPLACEABLE



Volt Meter Type BE-96V ACCURACY CLASS 1.5	PRICE
0-250 V	@ n/a
0-300 V	
0-400 V	
0-500 V	
0-600 V	

Ammeter For C/T Rang Type BE-96A ACCURACY CLASS 1.5	PRICE
0-30/5A, 0-50/5A, 0-60/5A, 0-100/5A, 0-150/5A	@ n/a
0-200/5A, 0-250/5A, 0-300/5A, 0-400/5A, 0-500/5A	
0-600/5A, 0-800/5A, 0-1,000/5A, 0-1,200/5A	
0-1, 500/5A, 0-2,000/5A, 0-2,500/5A, 0-3,000/5A	

Direct Ammeter Type BE-96A	PRICE
0-30A, 0-50A	@ n/a
0-60A, 0-100A	@ n/a

พาวเวอร์แฟคเตอร์มิเตอร์	PRICE
Power Factor Meter 380 V Type SR-4	@ n/a

Kilowatt Meter 220/380V Type SR-KW	PRICE
30KW/C.T. 50/5, 50KW/C.T. 100/5, 60KW/C.T. 100/5, 100KW/C.T. 150/5, 120KW/C.T. 200/5, 150KW/C.T. 200/ 5, 200KW/C.T. 300/5,	@ n/a
250KW/C.T. 400/5, 300KW/C.T. 500/ 5, 400KW/C.T. 600/5,	
500KW/C.T. 800/5, 600KW/C.T.1,000/ 5, 800KW/C.T. 1,200/5,	
1,000KW/C.T. 1,500/5, 1,200KW/C.T.2,000/5, 1,500KW/C.T. 2,500/5,	
2,000KW/C.T. 3,000/5, 2,500KW/C.T.4,000/5, 3,000KW/C.T. 5,000/5	

Frequency Meter Type BE-96 ACCURCY CLASS 1 RATING : VOLTAGE 200/250, 380/440 V Frequency span : 45/55	PRICE
45-55H 220/380V	(สั้น) @ n/a
45-55H 220V	
45-55H 220/380V	(เข็ม) @ n/a
45-55H 220/380V	
45-65H 220V	



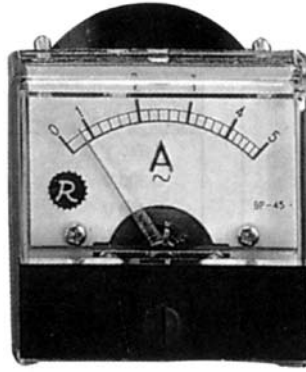
RISESUN PANEL METER

CE ISO 9002

VOLT - AMP METER

AMP METER แอมป์มิเตอร์

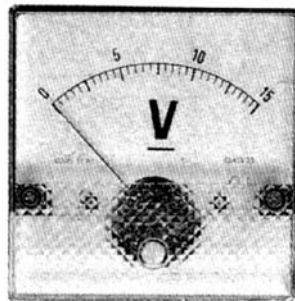
SIZE 80 x 80 mm.



Type	Amp Range	Dimension	Accuracy	PRICE
BP-80A	0-5A, 0-10A, 0-15A, 0-20A, 0-30A, 0-40A, 0-50A, 0-60A, 0-80A, 100A	80 x 80 mm.	Class 2.5	@ n/a
BP-80A	0-50/5A, 0-60/5A, 100/5A, 150/5A, 200/5A, 0-300/5A, 400/5A, 500/5A, 600/5A			@ n/a

VOLT METER โวลท์มิเตอร์

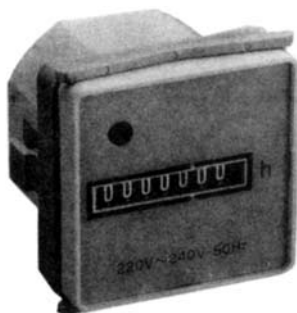
SIZE 80 x 80 mm.



Type	Amp Range	Dimension	Accuracy	PRICE
BP-80V	0 - 300 V	80 x 80 mm	Class 2.5	@ n/a
	0 - 400 V			
	0 - 500 V			
	0 - 600 V			

REVALCO HOUR METER

CE APPROVAL



Model no : HM-1, HM-2 (RAIL TYPE)
 Supply Voltage : AC110V, 220V/50 Hz, 60Hz
 Dimension : 48x48x40 mm
 Time Range : 0-99,999.99 Hours
 Net weight : 50 g.

PRICE @ n/a

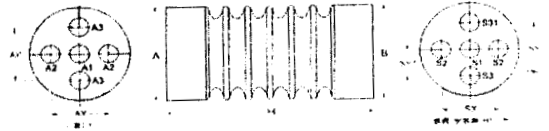
ราคานี้อาจเปลี่ยนแปลงโดยไม่ต้องแจ้งให้ทราบล่วงหน้า



HIGH VOLTAGE INSULATORS



RS-12 @ n/a **RS-15 @ n/a** **RS-24 @ n/a** **RS-6M @ n/a** **RS-3M @ n/a**



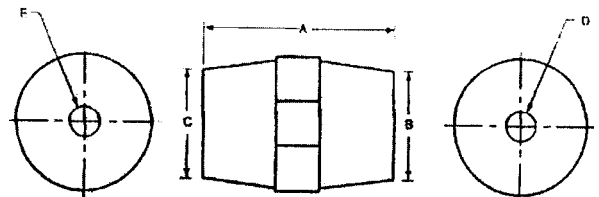
Part No.		RS-24	RS-15	RS-12	RS-6M	RS-3M
End diameters (A/B),mm.		70	70	58	70	70
Height / (H), mm.		210	142	130	90	60
Surface leakage distance, mm.		356	210	172	125	88
Rated voltage, kV		24	15	12	7.2	3.6
Low frequency dielectric strength, kV		60	50	36	22	16
Impulse voltage resistance, kV		125	110	95	75	60
Persistent bending strength, 1 min, kg.		300	400	300	400	400
Tensile, strength, kg.		>1,500	>1,500	>2,000	>1,200	>1,200
Torque strength, kg-m.		>25	>25	>25	>25	>25
INSERTS ARRANGEMENT	TOP	A1	M10	M10	M10	M10
		A2	---	---	M8	M8
		A3	M8	M8	---	---
		AX	---	---	36	40
		AY	40	40	---	---
	BOTTOM	S1	M10	M10	M10	M10
		S2	---	---	---	---
		S3	---	---	---	---
		S31	---	---	---	---
		SX	---	---	---	---
		SY	---	---	---	---
		SY1	---	---	---	---

1. Material : Bluk molding compound. unsaturated polyester resin based or EPOXY based.
2. Nut insert : Brass, various specifications are available. Arrangement of nut insert can be designed upon request.
3. Test specifications :: JIS C3801 and JIS C3851.
4. Color : Dark Brown or Dark Red.
5. Dimension and characteristics : (Shown below)

LOW VOLTAGE INSULATORS DIMENSION



RM-25 @ n/a **RM-35 @ n/a** **RM-51 @ n/a** **RM-76 @ n/a**



Item No.	A	B	C	D	E
RM-25/RM-25S	25	30	22.9	M6	M6
RM-35/RM-35A	35	32	28	M8	M8
RM-51/RM-51A	51	36	29	M8	M8
RM-76/RM-76A	76	50	36	M10	M10

