

FEATURES

- ◆ Similar to TEND TM series micro switch
- ◆ Put a magnet in the contact block to prevent fire.
- ◆ The safety switch for DC usage.

SPECIFICATIONS

RATINGS

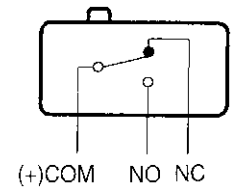
Rated Voltage (V)	Noninductive load (A)				Inductive load (A)			
	Resistive Load		Lamp load		Inductive load		Motor Load	
	NC	NO	NC	NO	NC	NO	NC	NO
8 VDC	15	3	1.5	15	15	5	2.5	
14 VDC	15	3	1.5	15	10	5	2.5	
30 VDC	15	3	1.5	10	10	5	2.5	
125 VDC	10	3	1.5	7.5	6	5	2.5	
250 VDC	3	3	1.5	2	1.5	2	1.5	

- NOTES : 1. Inductive load has a power factor of 0.4 min. (AC) and a time constant of 7 msec. Max. (DC)
 2. Lamp load has an inrush current of 10 times the steady-state current, while motor load has an inrush current of 6 times the steady-state current.

CHARACTERISTICS

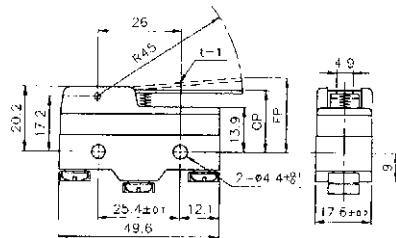
Operating speed	0.1 mm to 1 m/s
Operating frequency	Mechanically : 240 Operations/min. Electrically : 20 operations/min.
Contact resistance	15 mΩ max. (initial)
Insulation resistance	100 mΩ min. (at 500 VDC)
Dielectric strength	1,500 VAC, 50/60 Hz for 1 minute
Vibration	10 to 55 Hz 1.5 mm double amplitude
Shock	Mechanically : Approx. 1,000 m/sec ² (approx. 100 G's) Electrically : Approx. 300 m/sec ² (approx. 30G's)
Ambient temperature	-25° ~ +85°C
Ambient Humidity	Below 85% RH
Service life	Mechanically : 10,000,000 Operations/min Electrically : 100,000 operations/min.
Weight	Approx. 27 g ~ 36 g

CONTACT CONFIGURATION

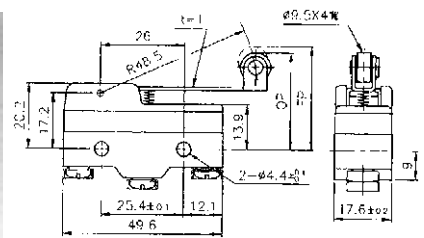
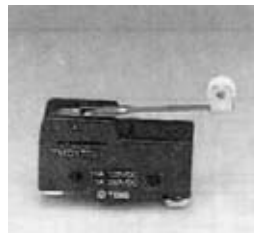


DIMENSIONS

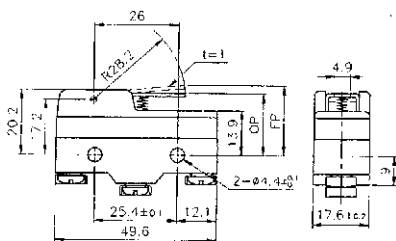
TMD1701



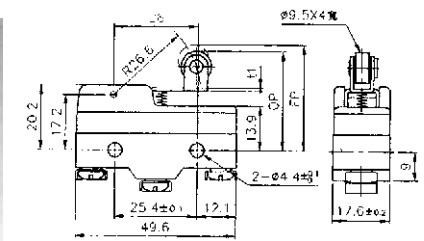
TMD1703



TMD1702



TMD1704



CHARACTERISTICS

TYPE	TMD1701	TMD1702	TMD1703	TMD1704
OF max	110gf (1.08N)	250gf (2.45N)	145gf (1.42N)	220gf (2.16N)
RF min	14gf (0.14N)	32gf (0.31N)	21gf (0.21N)	35gf (0.34N)
OT min	4.8 mm	2.1 mm	4 mm	2.4 mm
MD max	3.9 mm	1.7 mm	3 mm	1.7 mm
FP max.	34.6 mm	25.5 mm	40.5 mm	37.1 mm
OP	21.1 ±0.8 mm	20.7 ±0.8 mm	32.2 ±0.8 mm	32.2 ±0.8 mm